

## HS-820 SERIES

**Plate Materials:** POM-DP,POM-LF

**Pin Material:** Cold rolled austenitic stainless steel



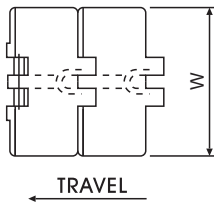
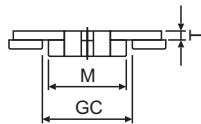
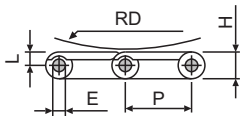
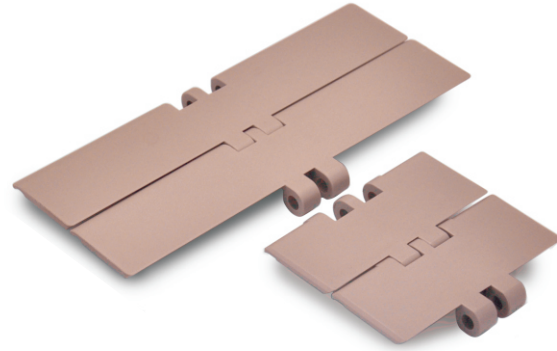
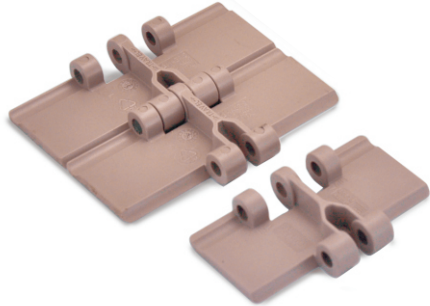
Materials



Sprockets



Applications



Dimension	mm	inches
P	38.1	1.5
M	42.1	1.657
L	7.2	0.283
H	13.5	0.531
E	6.35	0.25
T	4.0	0.189
RD	40	1.575
GC	44.5	1.732

### HS-820 (Straight Running Plastic Chain)

#### CHARACTERISTICS

	Width W		Working Load		Radius		Reverse Radius		Weight (kg/m)
	(mm)	(inch)	N(21°C)	lbs (21°C)	(mm)	(inch)	(mm)	(inch)	
HS-820 K250	63.5	2.50	1230	276	-	-	50	1.97	0.73
HS-820 K325	82.6	3.25	1230	276	-	-	50	1.97	0.83
HS-820 K330	83.8	3.30	1230	276	-	-	50	1.97	0.85
HS-820 K350	88.9	3.50	1230	276	-	-	50	1.97	0.87
HS-820 K400	101.6	4.00	1230	276	-	-	50	1.97	0.95
HS-820 K450	114.3	4.50	1230	276	-	-	50	1.97	1.03
HS-820 K600	152.4	6.00	1230	276	-	-	50	1.97	1.25
HS-820 K750	190.5	7.50	1230	276	-	-	50	1.97	1.47