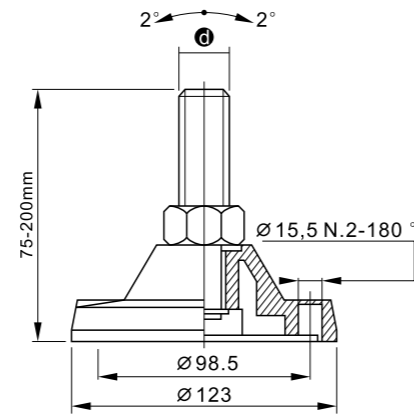
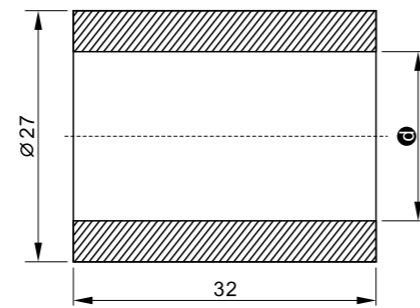
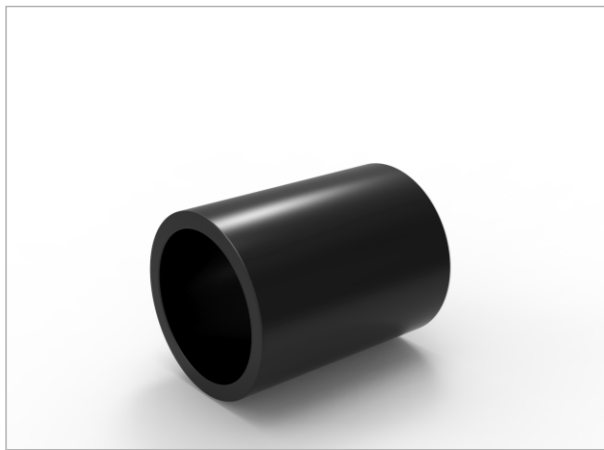


**Accessories**

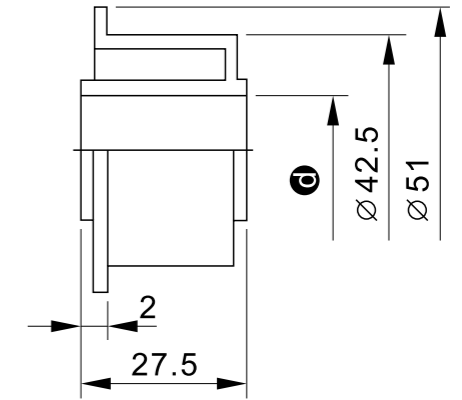
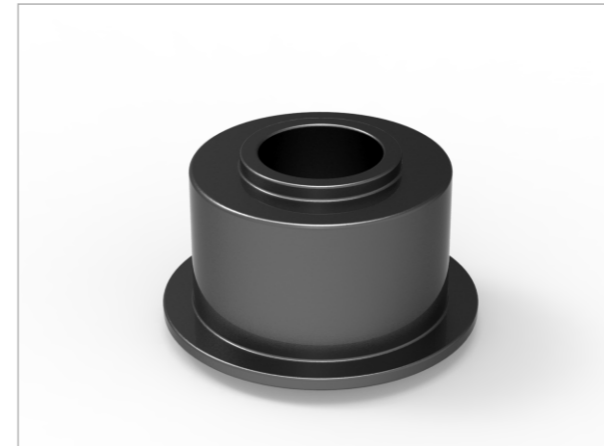


Type	Reference	screw diameter M	screw length L	Material	Kg
Low pin	HS-P703-1675	M16	75	Pa66 Nylon +Various metal bolts	0.45
	HS-P703-16100		100		0.49
	HS-P703-16150		150		0.51
	HS-P703-20100	M20	100		0.62
	HS-P703-20150		150		0.73
	HS-P703-24100	M24	100		0.80
	HS-P703-24150		150		0.85
	HS-P703-24200		200		0.95
	HS-P703-24250		250		1.15

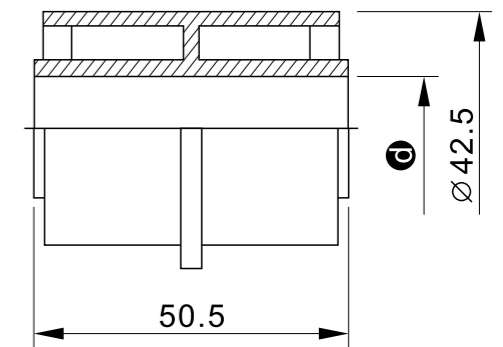
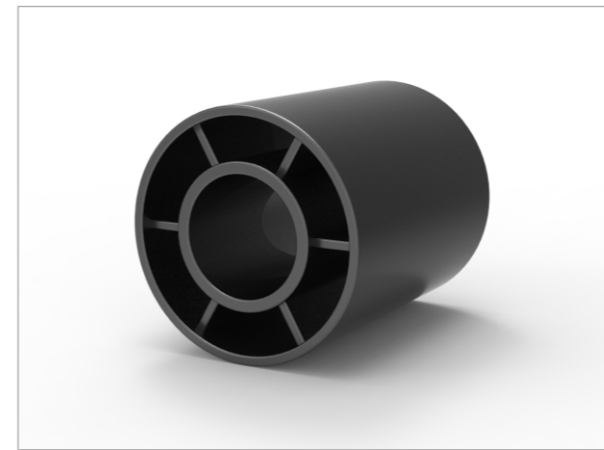
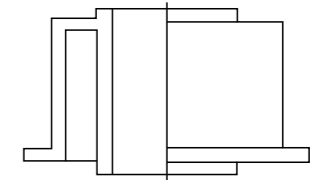


Type	Reference	Material	hole diameter Ø mm	Kg
Towing wheel B-3	HS-P600-16	Nylon	16	0.013
	HS-P600-20		20	0.080

**Accessories**

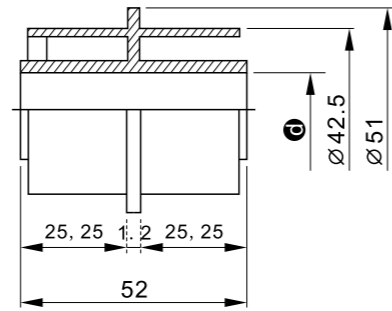


Type	Reference	Material	hole diameter Ø mm	Kg
Towing wheel B-1	HS-P601-16	Nylon	16	0.025
	HS-P601-20		20	0.020

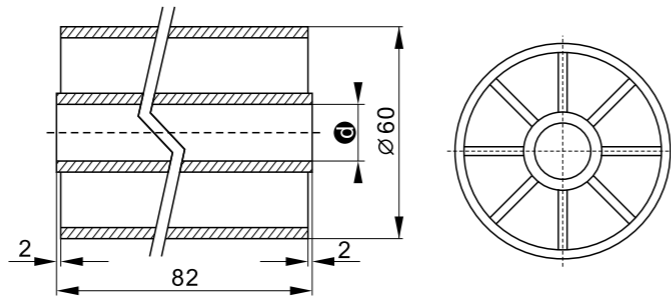
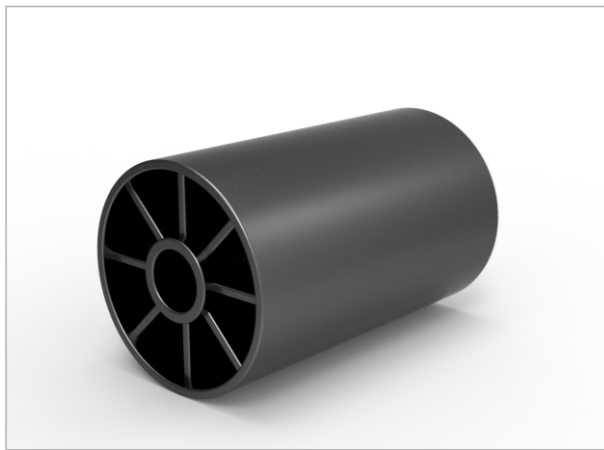


Type	Reference	Material	hole diameter Ø mm	Kg
Towing wheel B-2	HS-P602-16	Nylon	16	0.035
	HS-P602-20		20	0.025

**Accessories**

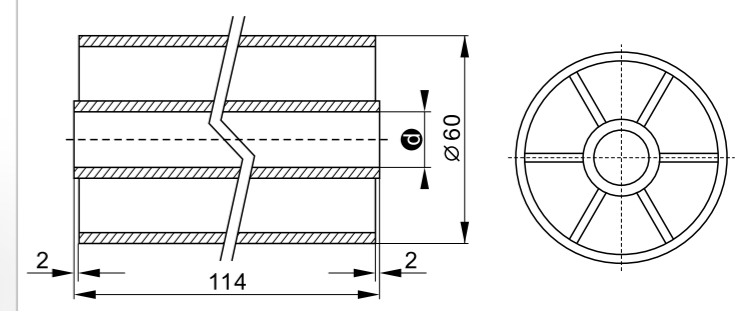


Type	Reference	Material	hole diameter $\varnothing$ mm	Kg
Towing wheel B-4	HS-P612-16	Nylon	16	0.040
	HS-P612-20		20	0.030

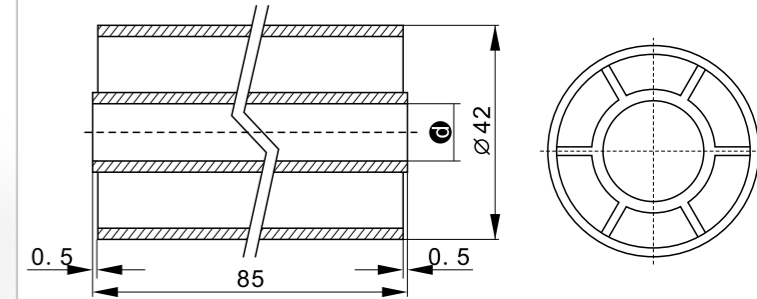
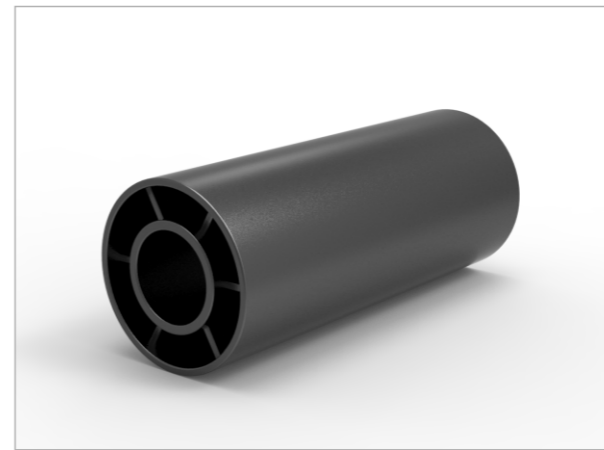


Type	Reference	Material	hole diameter $\varnothing$ mm	Kg
Towing wheel C	HS-P604-16	Nylon	16	0.090
	HS-P604-20		20	0.086

**Accessories**

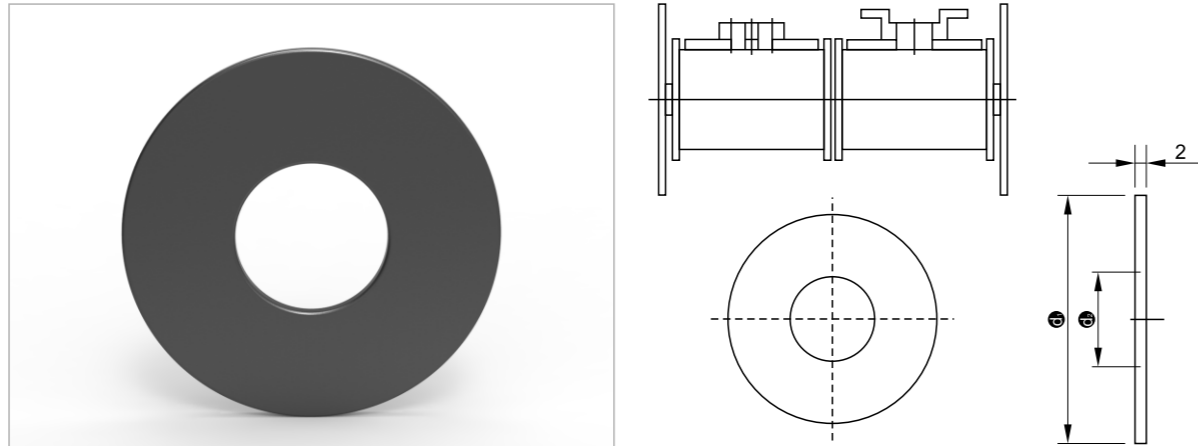


Type	Reference	Material	hole diameter $\varnothing$ mm	Kg
Towing wheel D	HS-P605-16	Nylon	16	0.120
	HS-P605-20		20	0.110

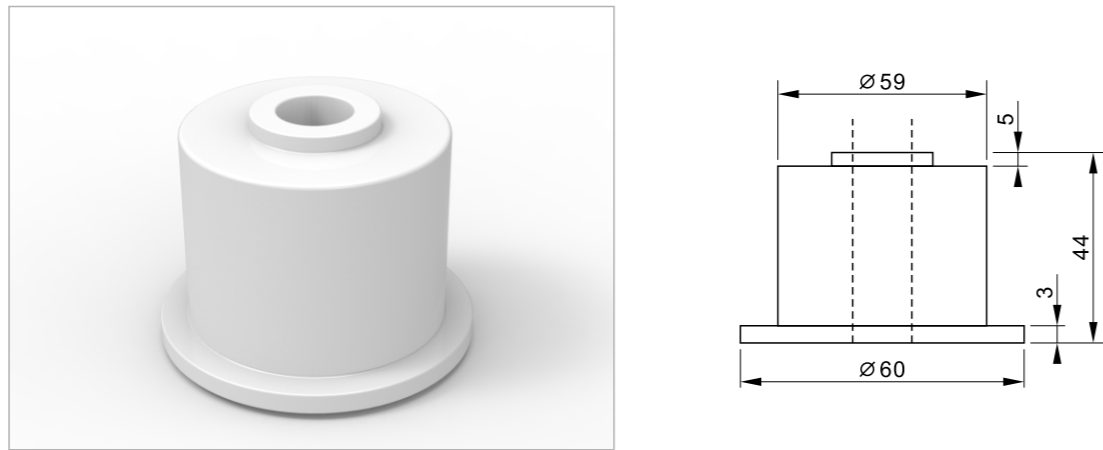


Type	Reference	Material	hole diameter $\varnothing$ mm	Kg
Towing wheel G	HS-P610-16	Nylon	16	0.073
	HS-P610-20		20	0.060

**Accessories**

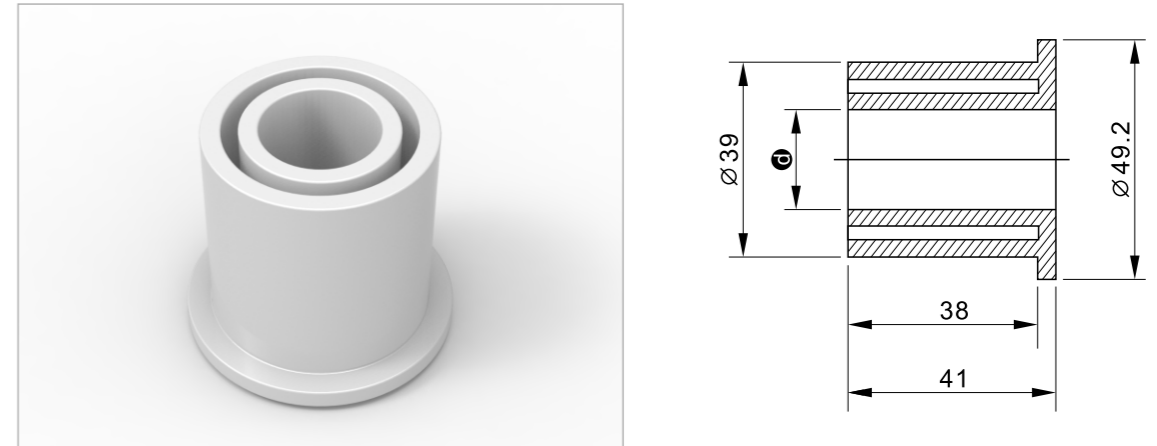


Type	Reference	Material	hole diameter ① mm	Kg
Towing wheel C. D.G catch	HS-P606-16	Nylon	16	0.012
	HS-P606-20		20	0.010

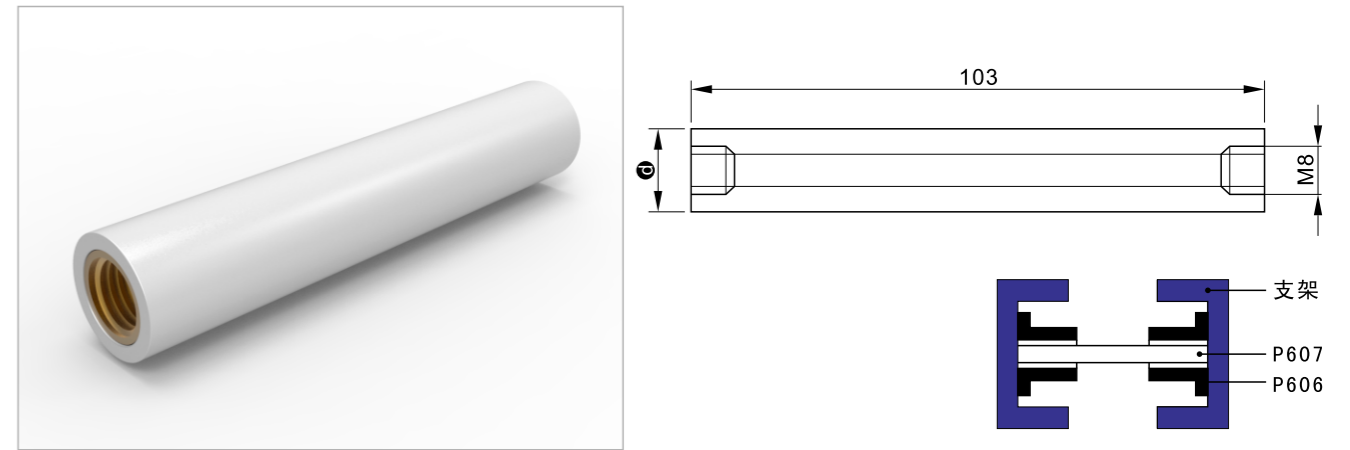


Type	Reference	Material	hole diameter ① mm	Kg
Towing wheel A	HS-P603-16	PE polyethylene	16	0.040
	HS-P603-20		20	0.035

**Accessories**

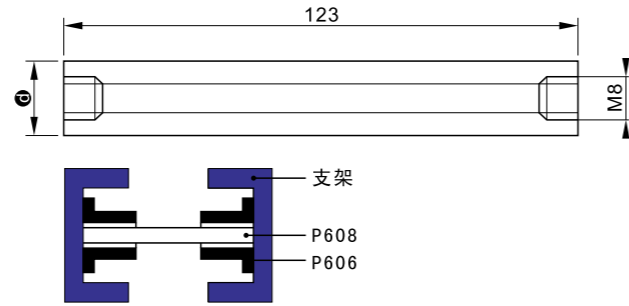
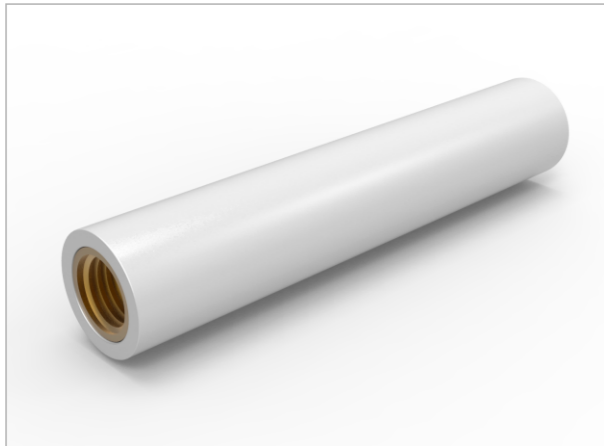


Type	Reference	Material	hole diameter ① mm	Kg
Towing wheel E	HS-P607-16	PE polyethylene	16	0.030
	HS-P607-20		20	0.025



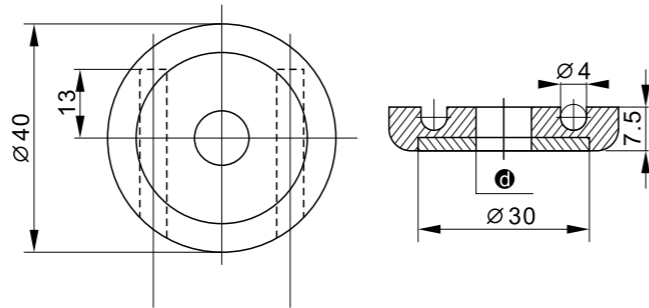
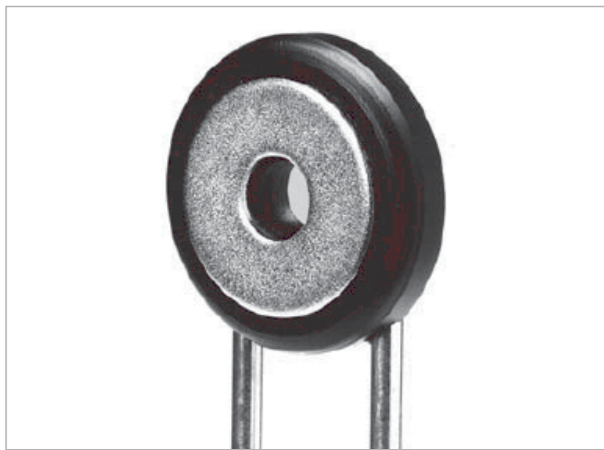
Type	Reference	Material	hole diameter ① mm	Kg
Support shaft B	HS-P608	PE polyethylene	20	0.11

**Accessories**



Type	Reference	Material	hole diameter $\varnothing$ mm	Kg
Support shaft B	HS-P609	PE polyethylene	20	0.11

suitable for 114.3mm width plastic chains

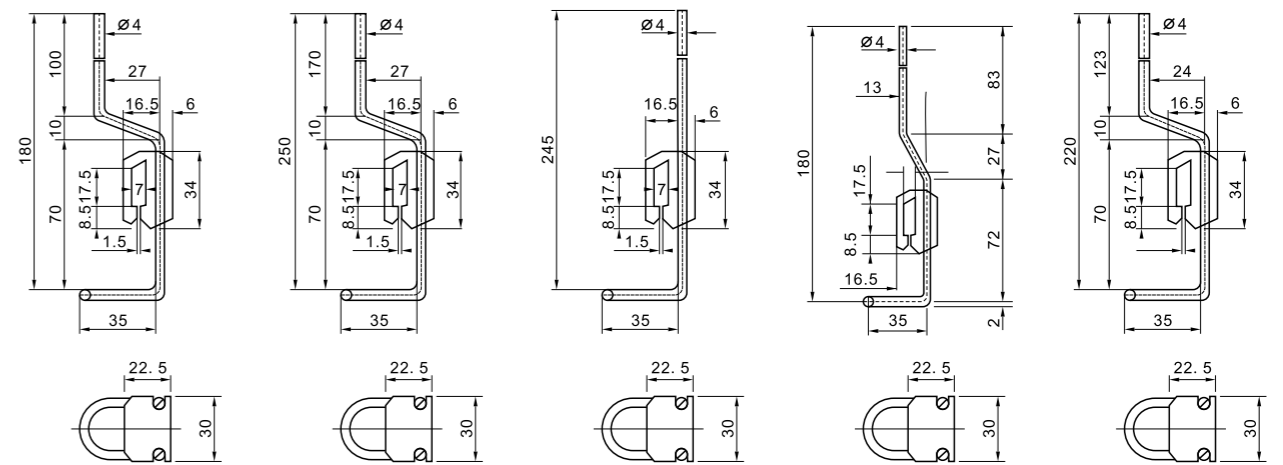
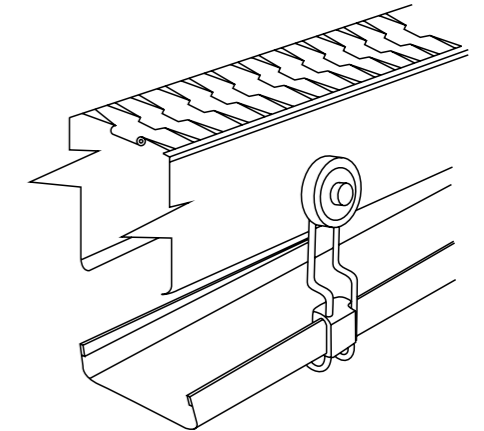


Type	Reference	Material	hole diameter $\varnothing$ mm	Kg
Sink hanger head	HS-P620	Pa6 Nylon	10	0.075

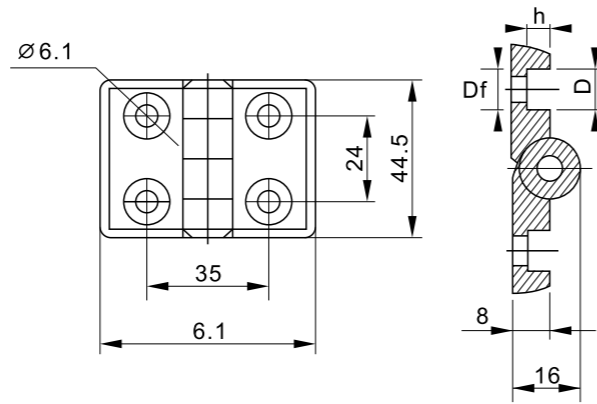
**Accessories**



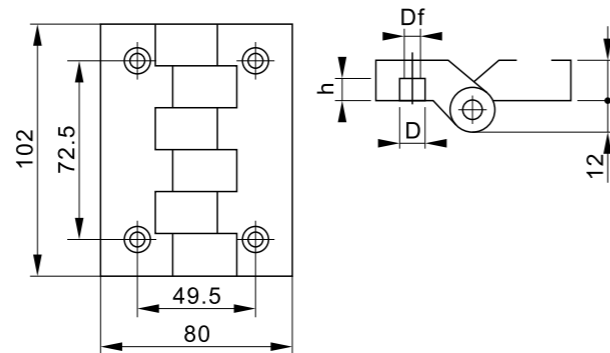
Type	Reference	Length
Sink hanger	HS-P621-250	180mm
	HS-P621-253	250mm
	HS-P621-255	245mm
	HS-P621-257	180mm
	HS-P621-251	220mm



**Accessories**

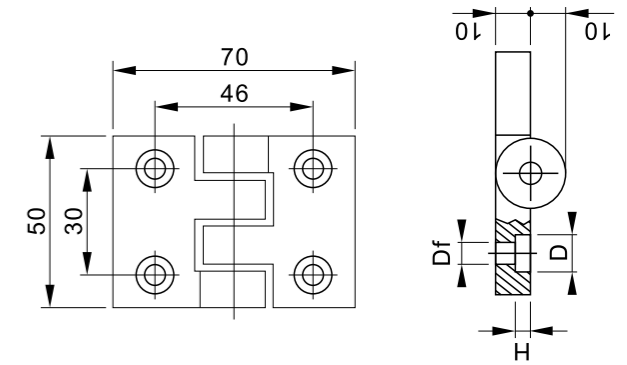


Type	Reference	Fixing screw	Df mm	D mm	h mm	Kg
Hinge C	HS-P801	M6	Ø6.5	Ø10.5	4.5	0.031

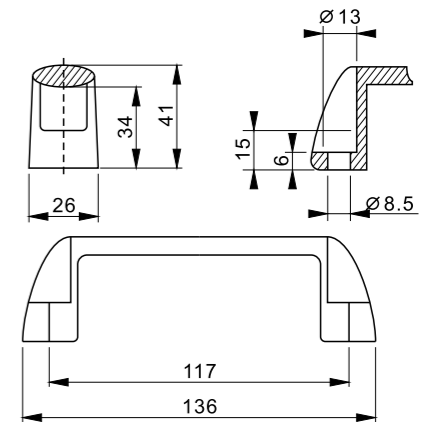


Type	Reference	Fixing screw	Df mm	D mm	h mm	Kg
Hinge A	HS-P802-6	M6	Ø6.5	Ø10.5	4.5	0.031
	HS-P802-8	M8	Ø8.5	Ø13.2	6	0.031

**Accessories**



Type	Reference	Fixing screw	Df mm	D mm	h mm	Kg
Hinge B	HS-P803	M6	Ø6.5	Ø10.5	6	0.031

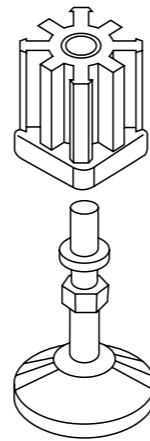
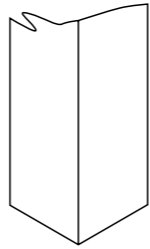
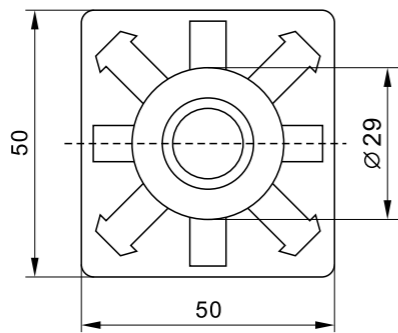
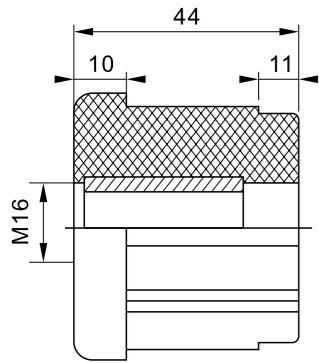


Type	Reference	Colour	Kg	Material
Medium-sized toothless handle	HS-P807	Black	0.07	Strengthened nylon PA6 embedded piece is copper

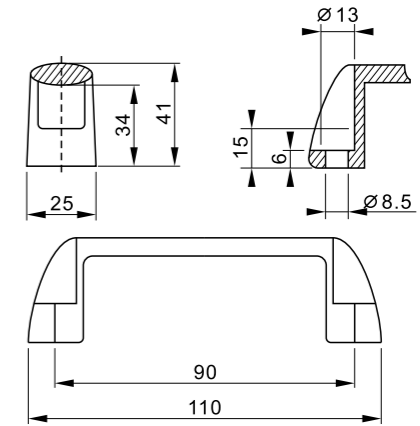
**Accessories**



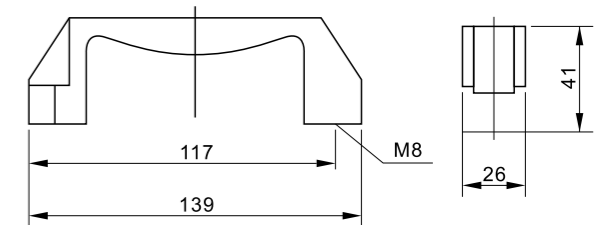
Type	Reference	(Diam)	Tubing outer dia	Thickness	Kg	Material
Theaded Tube EndsFor Square Tube	HS-P804-3010	M10	□ 30	1.75	300	Strengthened nylon PA6 embedded piece is copper
	HS-P804-3012	M12				
	HS-P804-3512	M12	□ 35	1.5	400	
	HS-P804-3516	M16				
	HS-P804-3812	M12	□ 28	1.5 , 1.75	500	
	HS-P804-3816	M16				
	HS-P804-3820	M20				
	HS-P804-4012	M12	□ 40	1.25 , 1.5 1.75	700	
	HS-P804-4016	M16				
	HS-P804-5016	M16	□ 50	1.5 , 1.75	1000	
HS-P804-5020	M20					
HS-P804-5020	M20					



**Accessories**

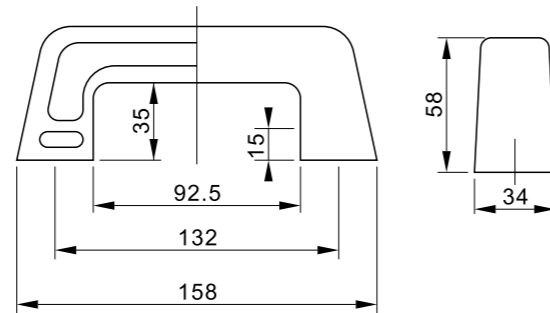


Type	Reference	Colour	Kg	Material
Medium-sized toothless handle	HS-P809	Black	0.07	Strengthened nylon PA6 embedded piece is copper

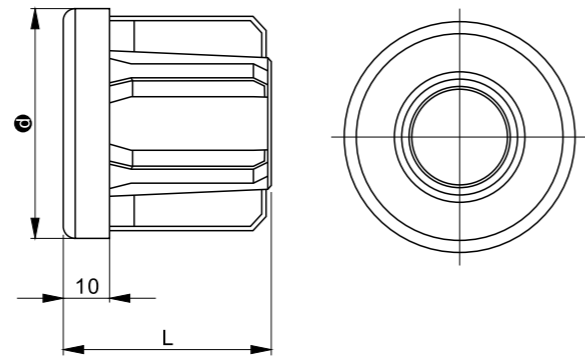


Type	Reference	Colour	Kg	Material
Medium-sized tooth handle	HS-P810	Black	0.07	Strengthened nylon PA6 embedded piece is copper

**Accessories**

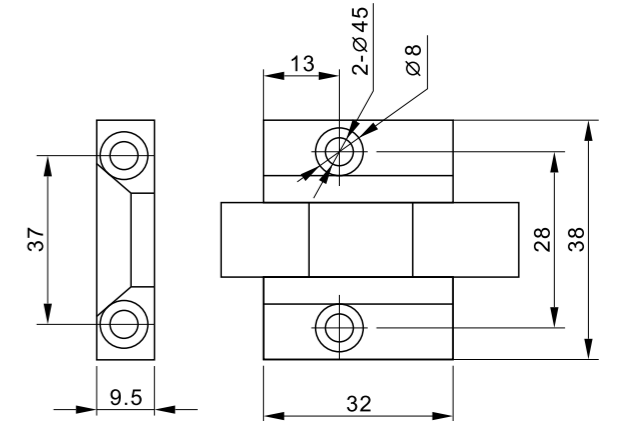


Type	Reference	Colour	Kg	Material
Large-sized tooth handle	HS-P811	Black	0.12	Strengthened nylon PA6 embedded piece is copper

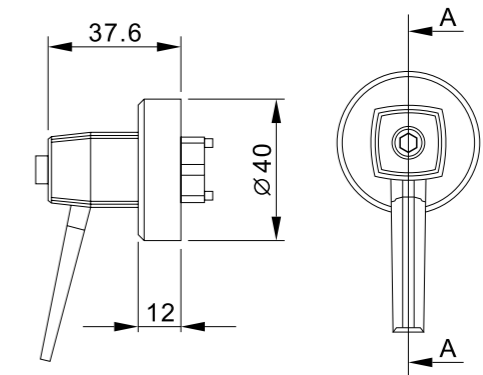


Type	Reference	Diam	Length (L)mm	Tubing outer dia	Thickness	Kg	Kg	Material
Round tube foot strap	HS-P805-4812	M12	45	⊙ 48	1.75	0.048	500	Strengthened nylon PA6 embedded piece is copper
	HS-P805-4813	M16	45					
	HS-P805-4820	M20	45					
	HS-P805-5013	M16	54	⊙ 50	1.5	0.060	1000	
	HS-P805-5020	M20	54					

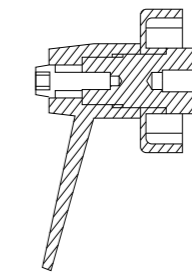
**Accessories**



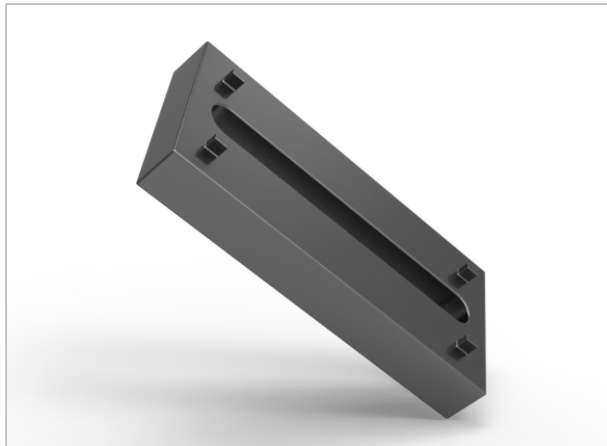
Type	Reference
Door lock	HS-P812



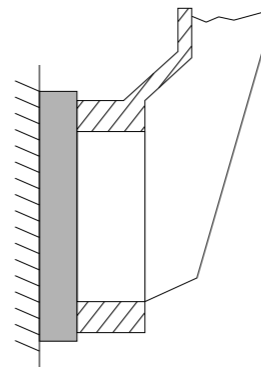
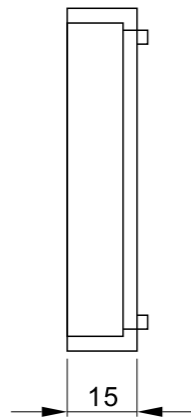
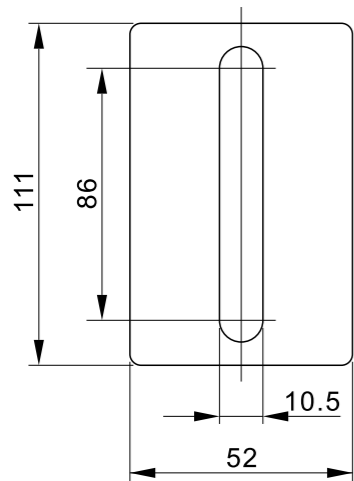
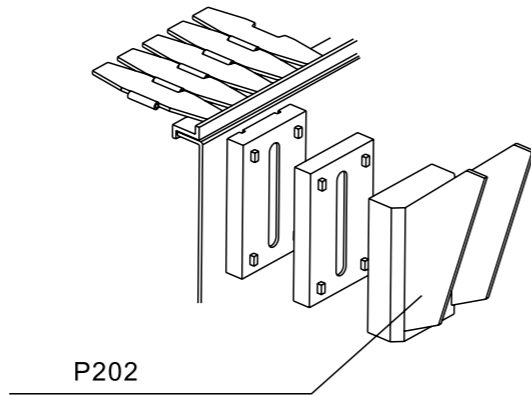
Type	Reference
Rotatable door lock	HS-P813



**Accessories**



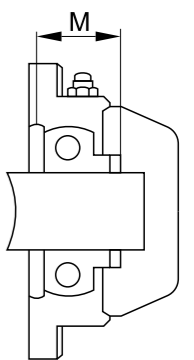
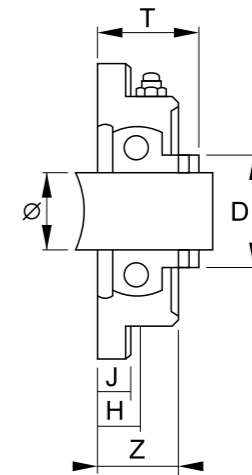
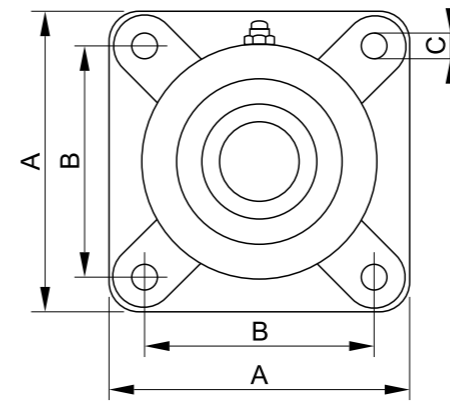
Type	Reference	Kg
Cushion block	HS-P815	0.06



**Accessories**

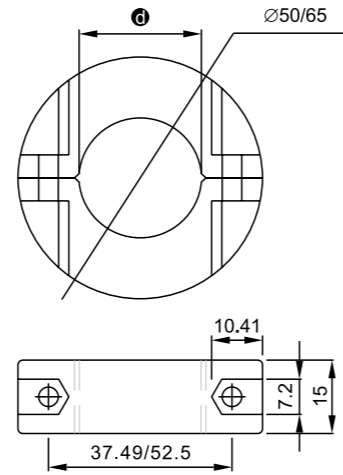
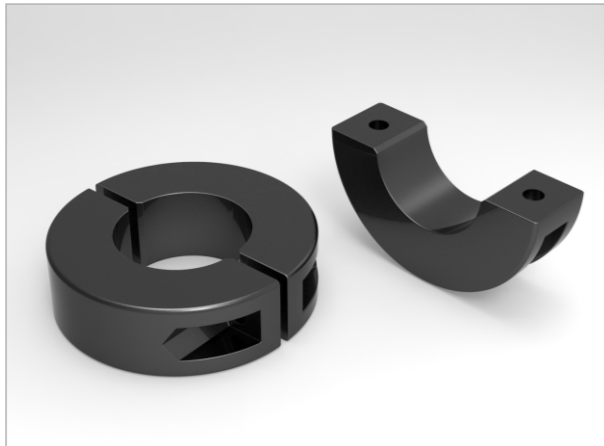


Type	Reference	dia ⌀ mm	A	B	C	H	J	T	Z	M	Material
Square plastic bearing sleeve	HS-P920-LS-205	25	95	70	11	17	14.3	34	28.5	34	Reinforced plastics
	HS-P920-LS-206	30	107	83	11	19	14.3	39.7	31.5	38.1	
	HS-P920-LS-207	35	118	92	13	21.5	15.5	44.9	34.5	42.9	
	HS-P920-LS-208	40	130	102	14	23	17	51.2	36.5	49.2	

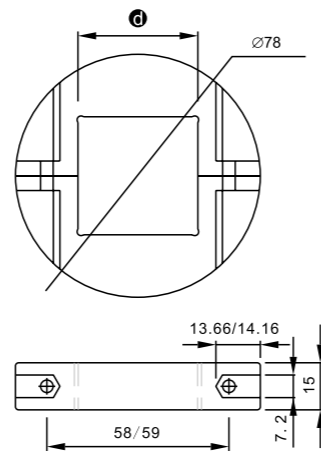
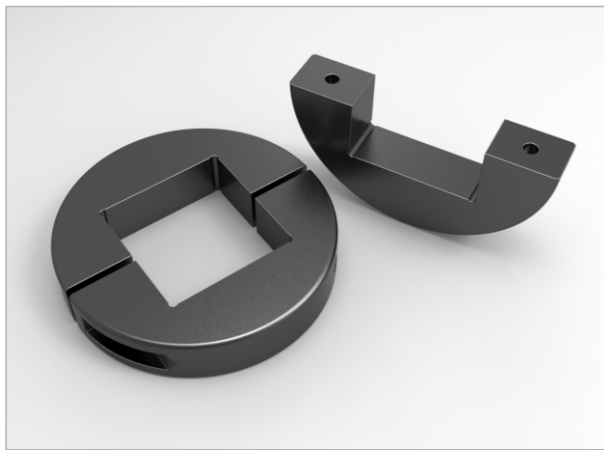




**Accessories**

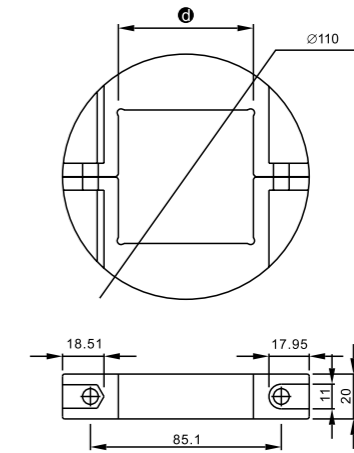
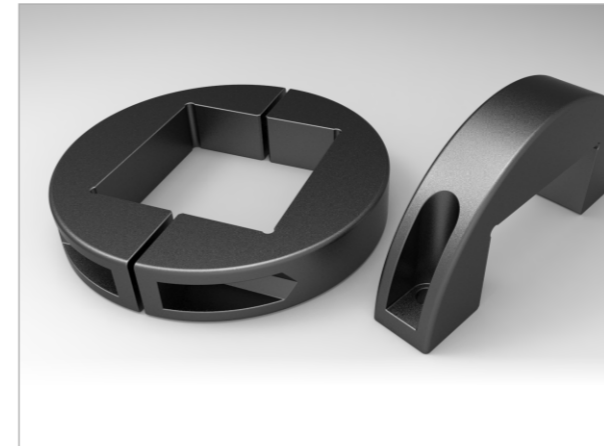


Type	Reference	dia ⌀ mm	Colour	Material
Round fixed shaft sleeve	HS-P910-25	25.1	Black	Nylon Pa6+ Stainless bolt
	HS-P910-30	30.1		
	HS-P910-35	35.1		
	HS-P910-40	40.1		

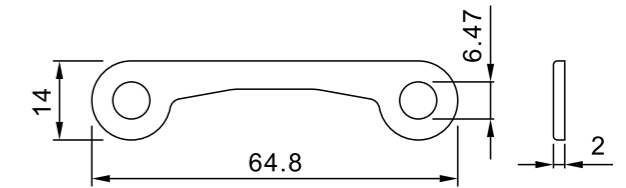


Type	Reference	dia ⌀ mm	Colour	Material
Square fixed shaft sleeve	HS-P912-38	38.2	Black	Nylon Pa6+ Stainless bolt
	HS-P912-40	40.2		

**Accessories**

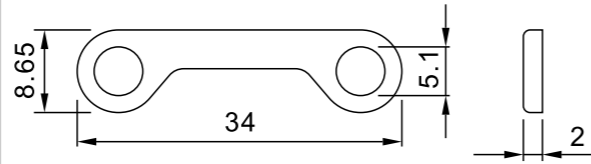


Type	Reference	dia ⌀ mm	Colour	Material
Square fixed shaft sleeve	HS-P914-60	60.2	Black	Nylon Pa6+ Stainless bolt

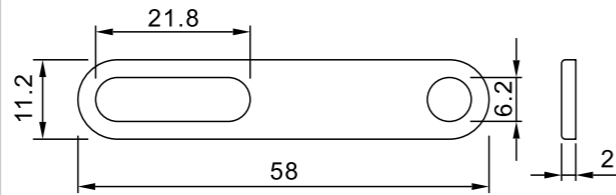


Type	Reference	Material	Colour
Strengthened iron links	HS-P100	stainless steel	Silvery

**Accessories**

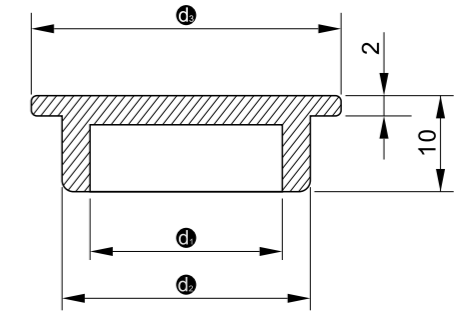


Type	Reference	Material	Colour
Strengthened iron links	HS-P200(500)	stainless steel	Silvery

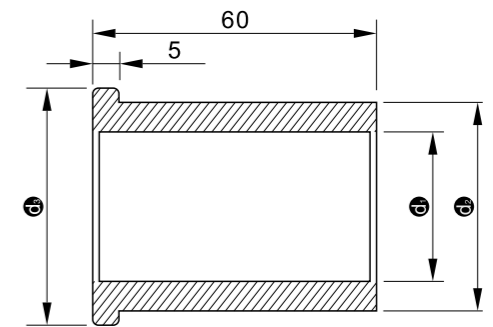
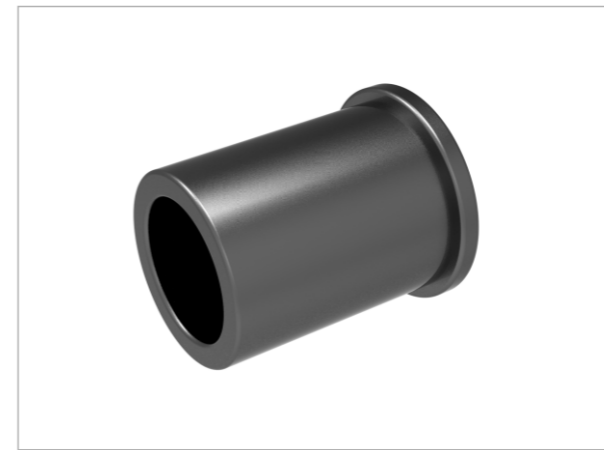


Type	Reference	Material	Colour
Strengthened iron links	HS-P300B-HD	stainless steel	Silvery

**Accessories**

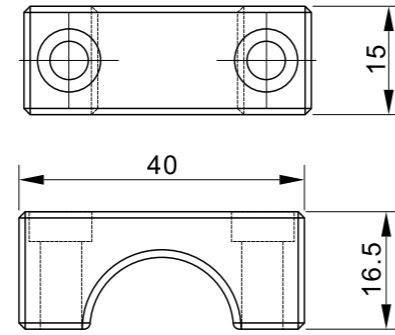
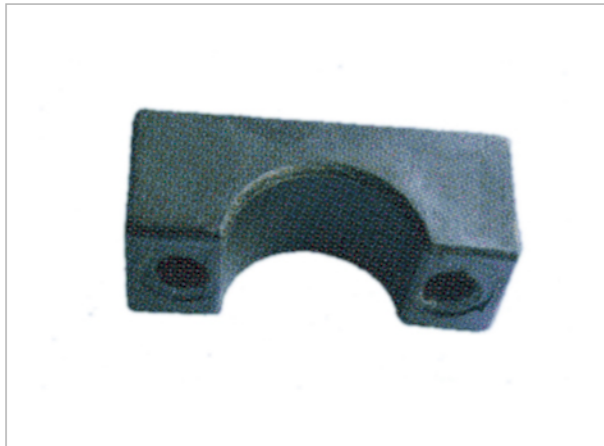


Type	Reference	d <sub>1</sub>	d <sub>2</sub>	d <sub>3</sub>	Colour	Kg	Material
Plastic seal head	HS-P961A	14	20	24	Black	0.0035	Nylon
	HS-P961B	20	26	32	Black	0.0050	Nylon

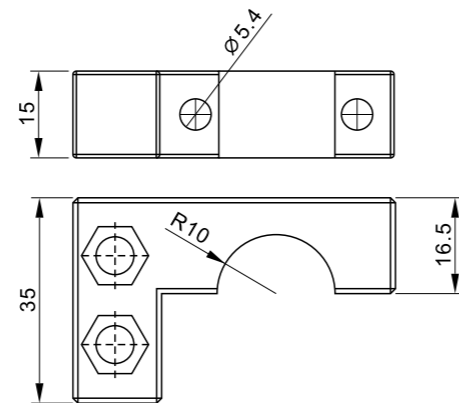


Type	Reference	d <sub>1</sub>	d <sub>2</sub>	d <sub>3</sub>	Colour	Kg	Material
Plastic seal head	HS-P962	32	44	50	Black	0.063	Nylon

**Accessories**

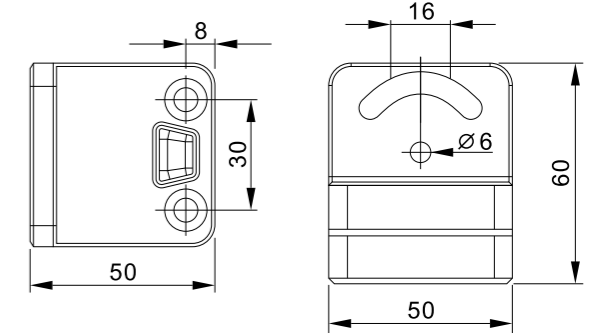
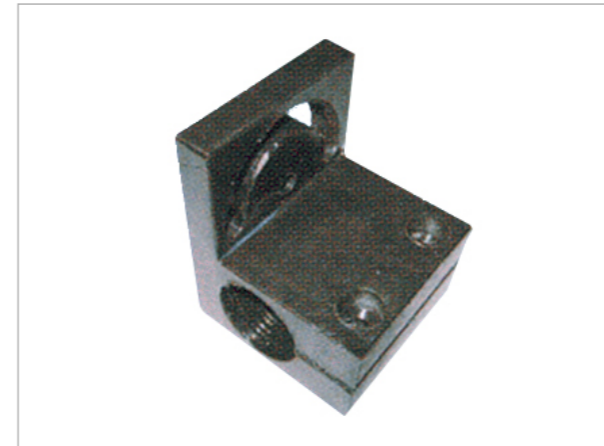


Type	Reference	Colour	Kg	Material
Fixed seat	HS-P968	Black	0.010	Nylon

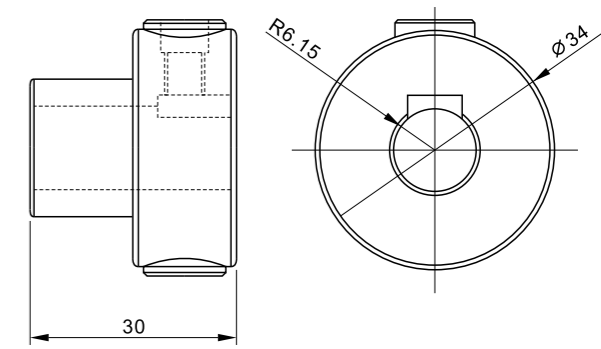
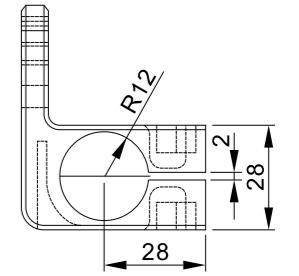


Type	Reference	Colour	Kg	Material
Fixed seat	HS-P969	Black	0.018	Nylon

**Accessories**

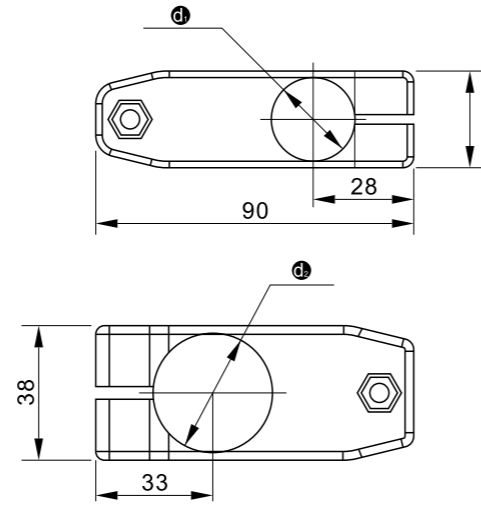


Type	Reference	Colour	Kg	Material
Fixed seat	HS-P963	Black	0.063	Nylon

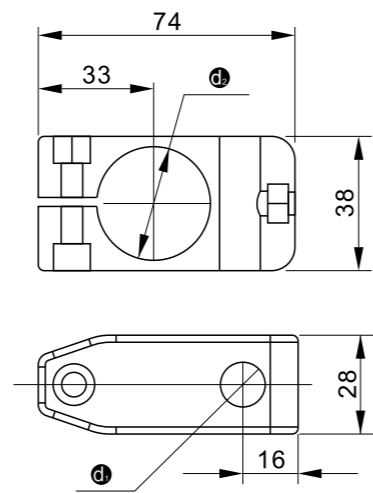
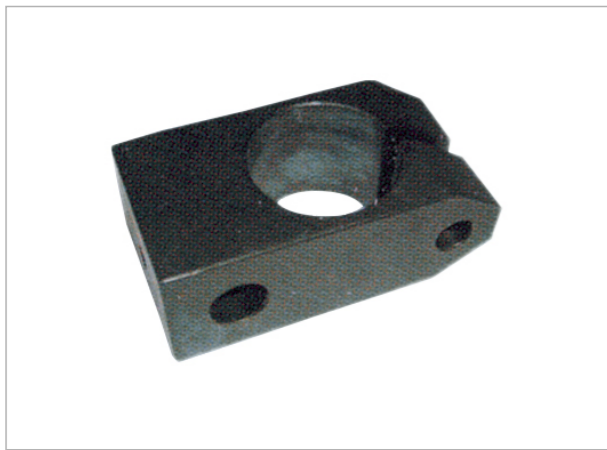


Type	Reference	Colour	Kg	Material
Fixed seat	HS-P967	Black	0.022	Nylon

**Accessories**



Type	Reference	d <sub>1</sub>	d <sub>2</sub>	Colour	Kg	Material
Cross connection head	HS-P965	24	32	Black	0.063	Nylon

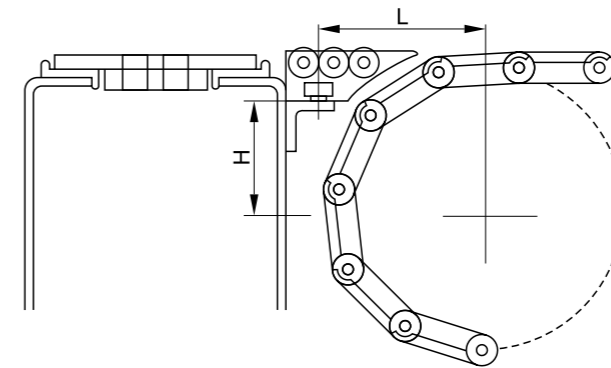
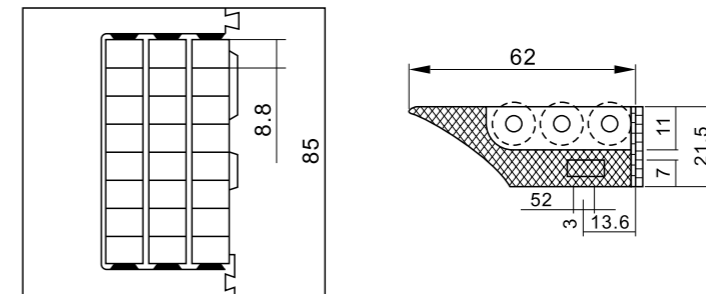


Type	Reference	d <sub>1</sub>	d <sub>2</sub>	Colour	Kg	Material
Cross connection head	HS-P966	24	32	Black	0.057	Nylon

**Accessories**



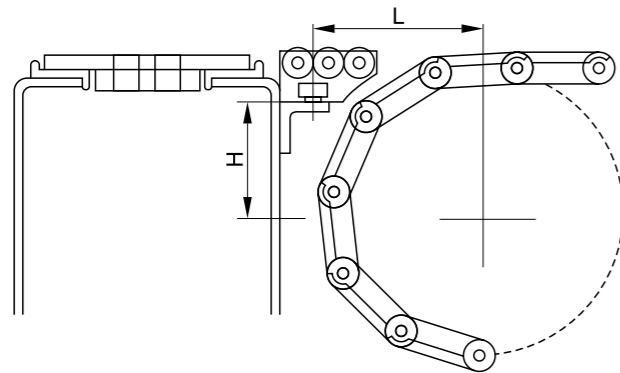
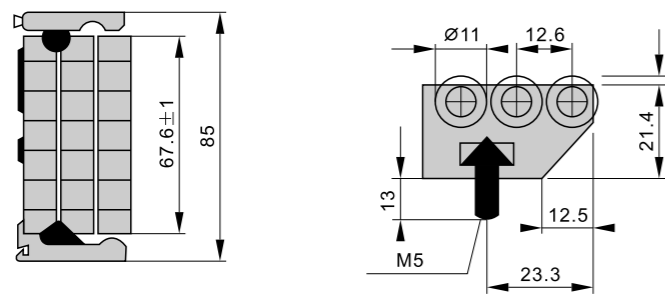
Type	Reference	Material	Kg
Roller Transfer	HS-P930-1	Polyformaldehyde + stainless steel (POM+SUS)	0.076



**Accessories**



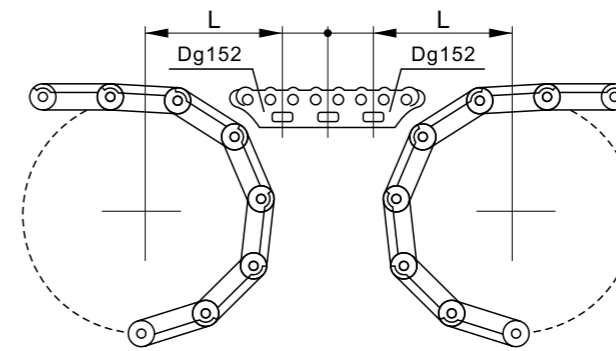
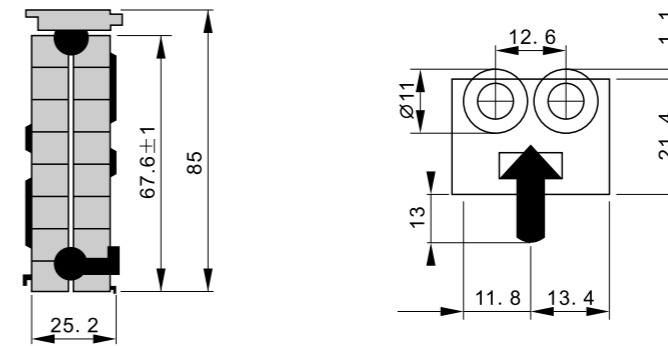
Type	Reference	Material	Kg
Roller Transfer	HS-P931	Polyformaldehyde + stainless steel (POM+SUS)	0.068



**Accessories**



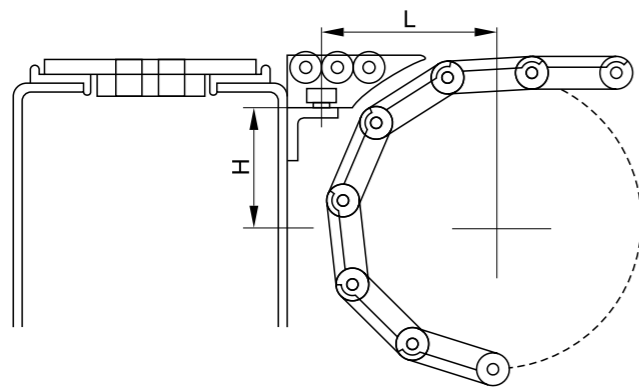
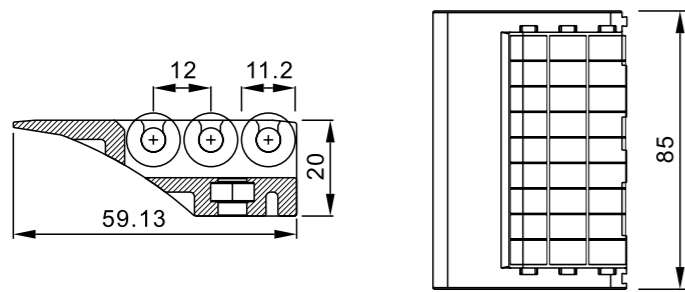
Type	Reference	Material	Kg
Roller Transfer	HS-P932-1	Polyformaldehyde + stainless steel (POM+SUS)	0.050



**Accessories**



Type	Reference	Material	Kg
Roller Transfer	HS-P930-2	Polyformaldehyde + stainless steel (POM+SUS)	0.076



**Accessories**



Type	Reference	Material	Kg
Roller Transfer	HS-P932-2	Polyformaldehyde + stainless steel (POM+SUS)	0.050

