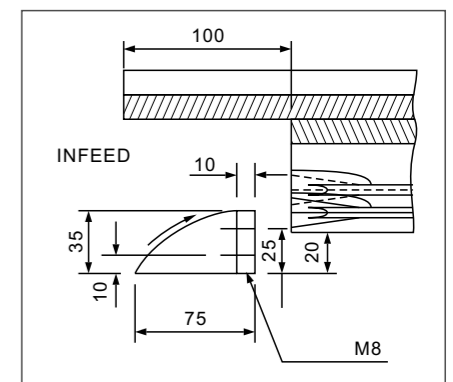
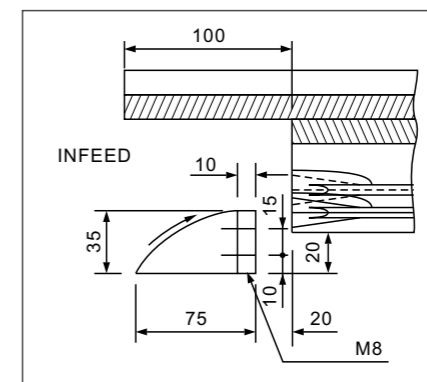
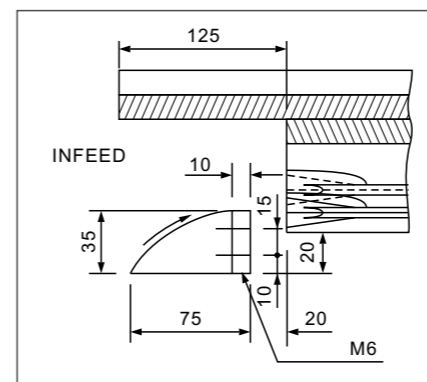
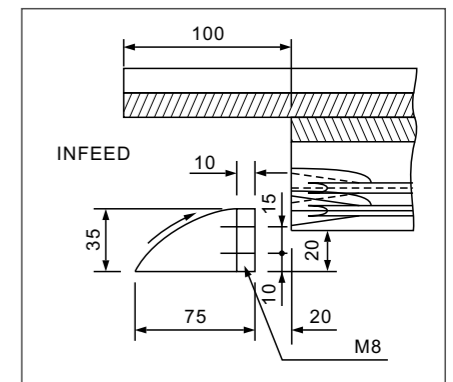
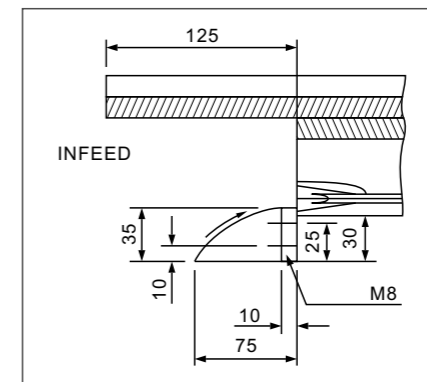
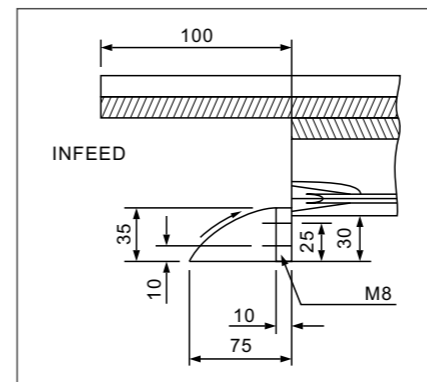
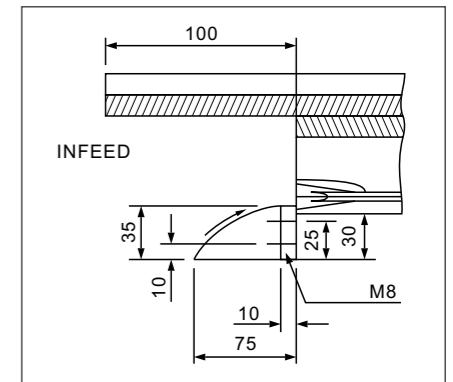
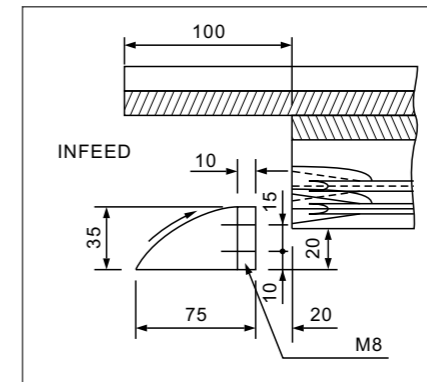
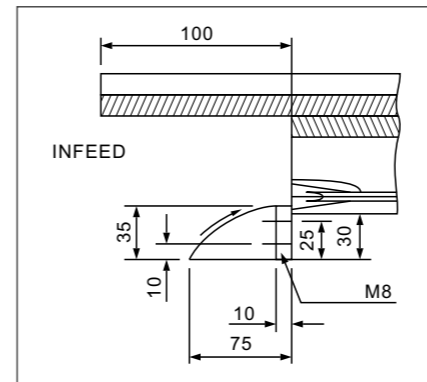
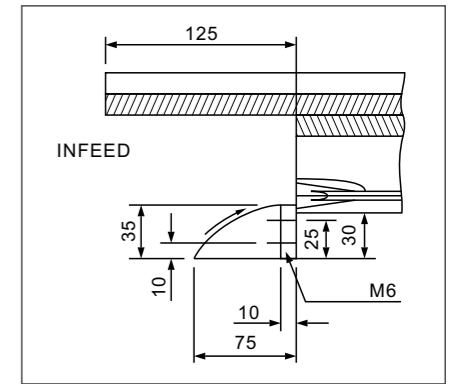
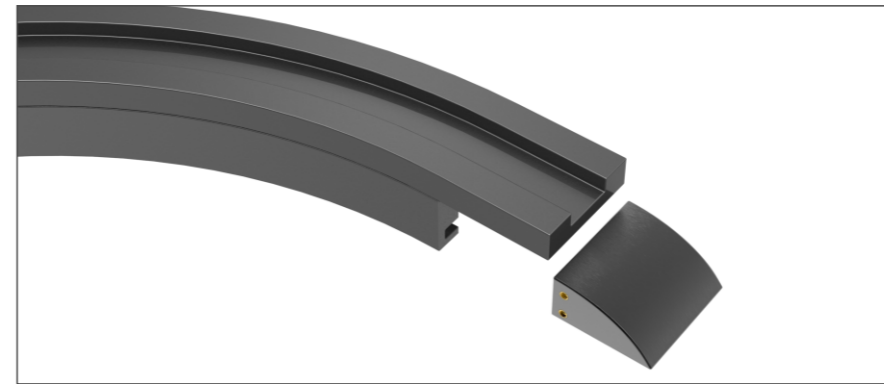
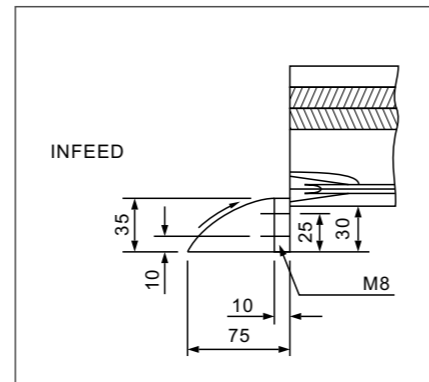
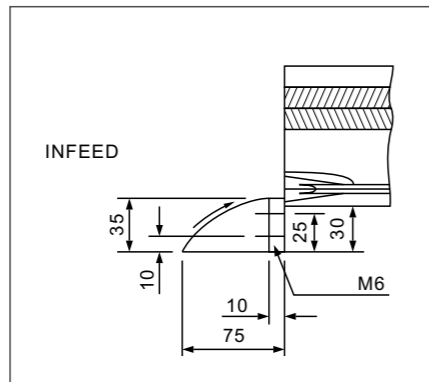
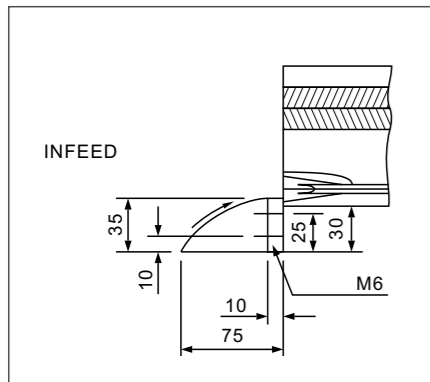
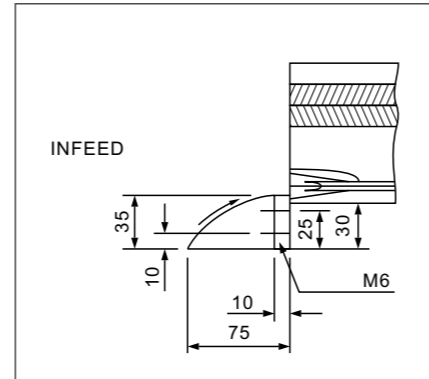
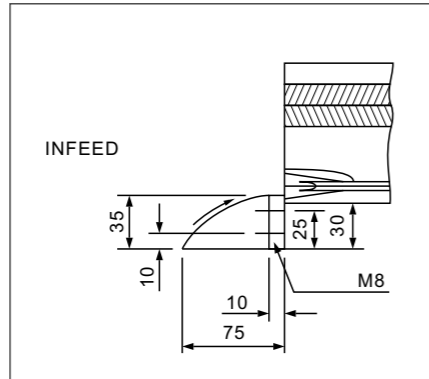
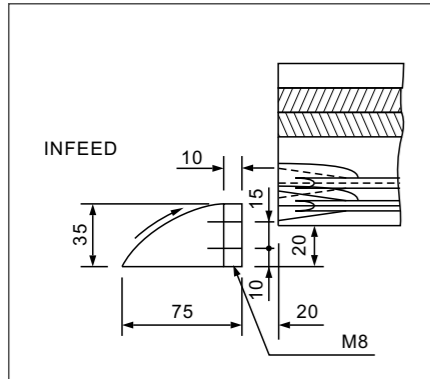
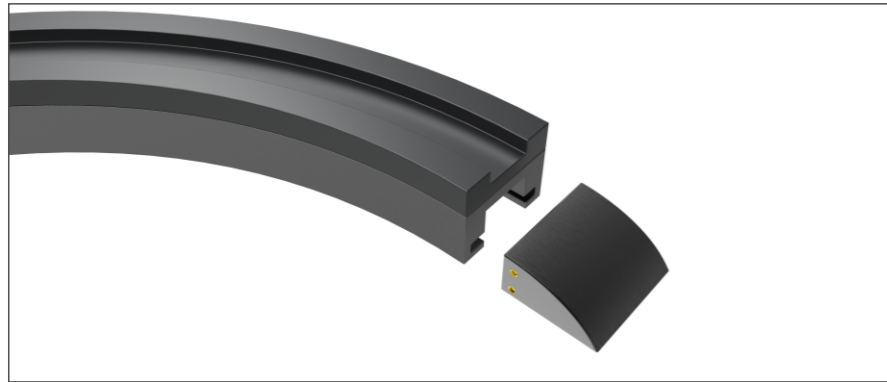


# Finger plate for Seats of Curved Guide Rail

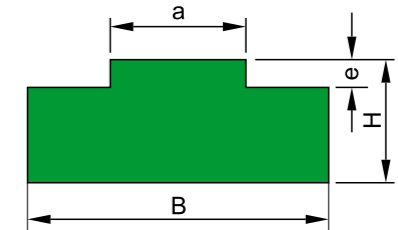
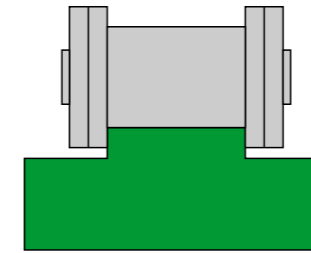


**Finger plate for Seats of Curved Guide Rail**



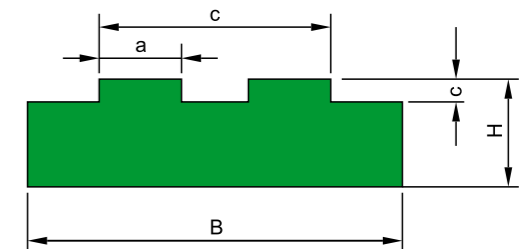
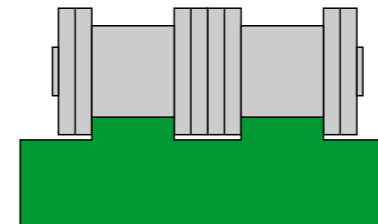
**High-strength chain guide rail**

**Chain guide rail**



Single-chain guide rail A1 model  
Standard length:2000mm

Type No.	Pitch(inch)	ISO-No.	a	e	B	H
HS-DG-T0	3/8" X7/32"	06-B1	5.5	1.5	15.0	10.0
HS-DG-T1	1/2" X5/16"	08-B1	7.5	2.2	20.0	10.0
HS-DG-T2	5/8" X3/8"	10-B1	9.3	2.6	20.0	10.0
HS-DG-T3	3/4" X7/16"	12-B1	11.3	2.6	25.0	10.0
HS-DG-T4	1" X17mm	16-B1	16.5	4.2	40.0	15.0
HS-DG-T5	1 1/4" X3/4"	20-B1	19.0	4.2	45.0	15.0
HS-DG-T6	1 1/2" X1"	24-B1	24.7	5.5	60.0	15.0
HS-DG-T7	1 3/4" X31mm	28-B1	30.1	6.8	75.0	20.0
HS-DG-T8	2" X31mm	32-B1	30.1	7.7	80.0	20.0



Dual-chain guide rail A2 model  
Standard length:2000mm

Type No.	Pitch(inch)	ISO-No.	a	c	e	B	H
HS-DG-T0.2	3/8" X7/32"	06-B2	5.5	15.7	1.5	25.0	10.0
HS-DG-T1.2	1/2" X5/16"	08-B2	7.5	21.4	2.2	35.0	10.0
HS-DG-T2.2	5/8" X3/8"	10-B2	9.3	25.8	2.6	40.0	10.0
HS-DG-T3.2	3/4" X7/16"	12-B2	11.3	30.6	2.6	45.0	10.0
HS-DG-T4.2	1" X17mm	16-B2	16.5	48.0	4.2	48.0	15.0
HS-DG-T5.2	1 1/4" X3/4"	20-B2	19.0	55.0	4.2	55.0	15.0
HS-DG-T6.2	1 1/2" X1"	24-B2	24.7	72.0	5.5	72.0	20.0
HS-DG-T7.2	1 3/4" X31mm	28-B2	30.1	89.0	6.8	89.0	25.0
HS-DG-T8.2	2" X31mm	32-B2	30.1	88.0	7.7	88.0	30.0